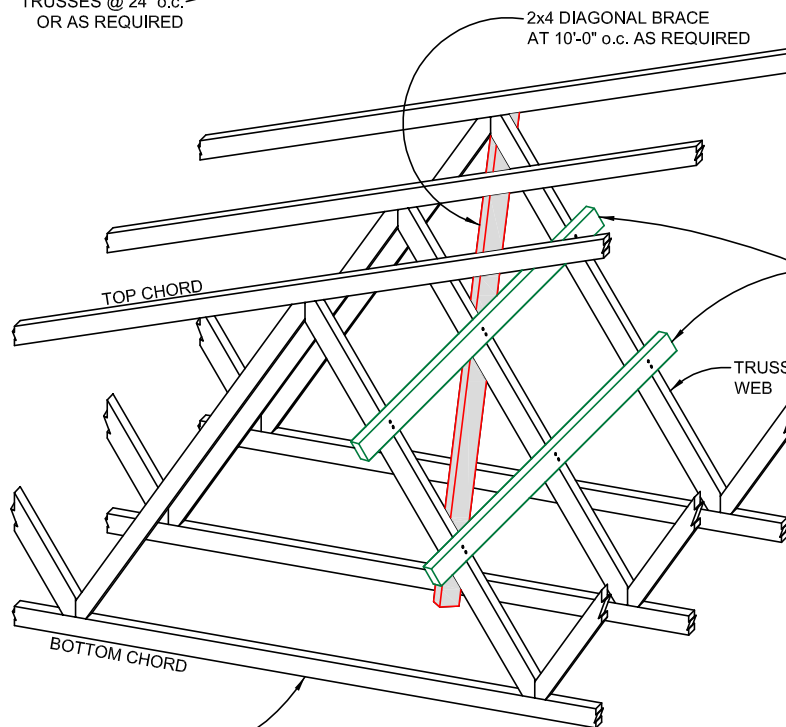


TRUSSES @ 24" o.c.
OR AS REQUIRED



TRUSSES @ 24" o.c.
OR AS REQUIRED

NOTES:

1. EXTEND DIAGONAL BRACE OVER
ADDITIONAL TRUSSES TO MAINTAIN A
MAXIMUM 45 DEGREE ANGLE.

CONTINUOUS LATERAL WEB BRACING AS
PER ENGINEERED TRUSS DRAWING.
EXTEND BRACE 3" PAST TRUSS.
(TYPICAL)

LONGITUDINAL WEB BRACE ANCHORING 3D DETAIL

NOT TO SCALE

epic truss systems ltd.

890 RIVERSIDE ROAD
ABBOTSFORD, BC V2S 7P6
Phone: (604) 850-3522
Fax: (604) 850-3533



epic truss squamish ltd.

1126 RESOLUTION WAY
SQUAMISH, BC V8B 0L3
Phone: (604) 892-3700
Fax: (604) 892-3715

Website: www.epictruss.com