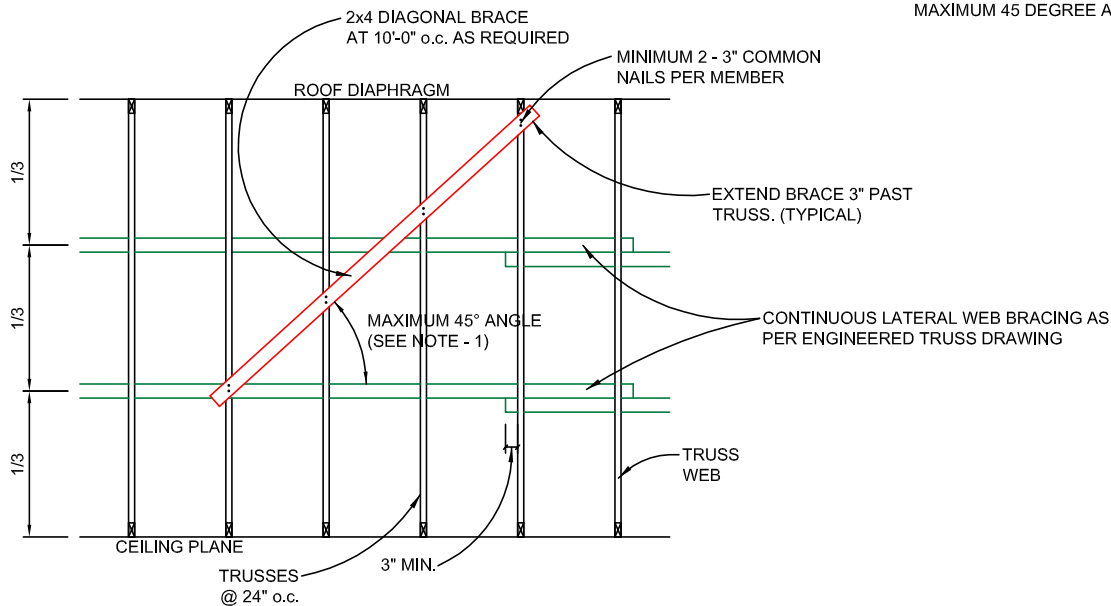


**NOTES:**  
 1. EXTEND DIAGONAL BRACE OVER ADDITIONAL TRUSSES TO MAINTAIN A MAXIMUM 45 DEGREE ANGLE.



**LONGITUDINAL WEB BRACE ANCHORING DETAIL**  
 NOT TO SCALE

**epic truss systems ltd.**

890 RIVERSIDE ROAD  
 ABBOTSFORD, BC V2S 7P6  
 Phone: (604) 850-3522  
 Fax: (604) 850-3533



**epic truss squamish ltd.**

1126 RESOLUTION WAY  
 SQUAMISH, BC V8B 0L3  
 Phone: (604) 892-3700  
 Fax: (604) 892-3715

Website: [www.epictruss.com](http://www.epictruss.com)